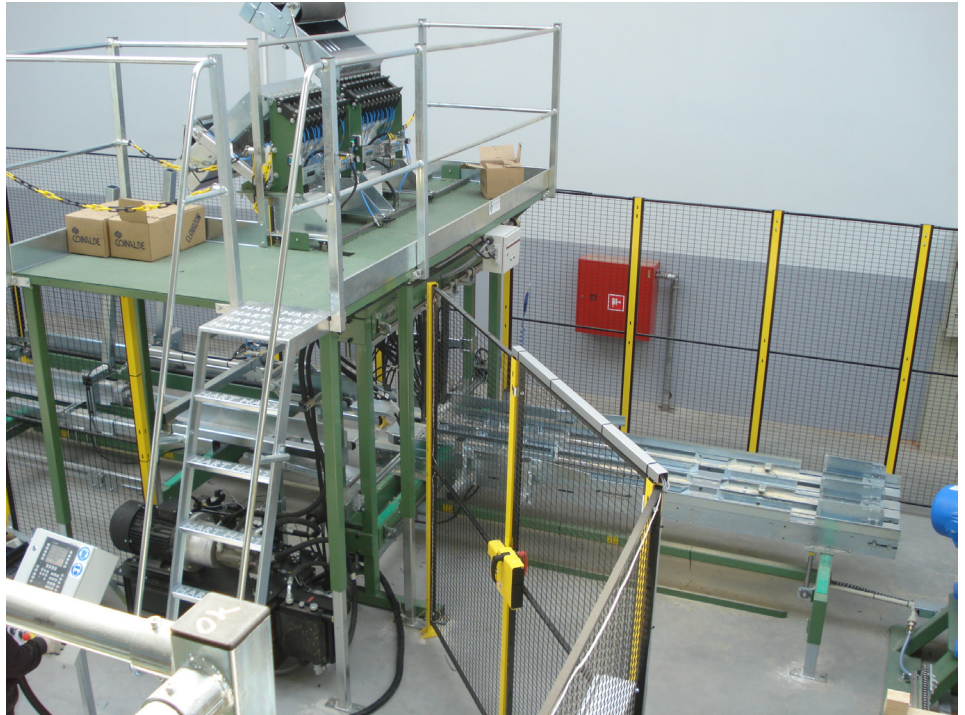
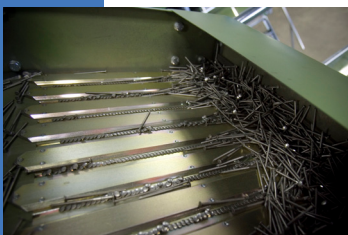
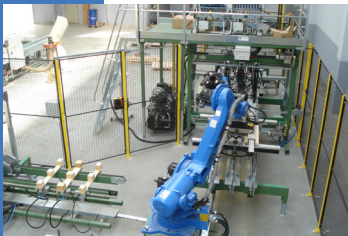
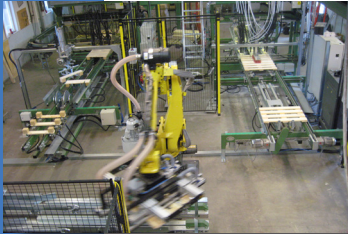




IM Hart AB
Machinery for the Pallet Industry

ASSEMBLY MACHINE SMS-2000

STANDARDIZED, FLEXIBLE, HYDRAULIC PALLET NAILING MACHINE.



Automatic Assembly machine SMS-2000

Very high capacity and perfect for small and big pallet series.

SMS-2000 assembles the pallets, after being fed from the leg and deck feeding.

The assembly channels are in width, motorized adjustable. A steady stream of pallets leaves the machine with an efficiency of four (4) pallets a minute.

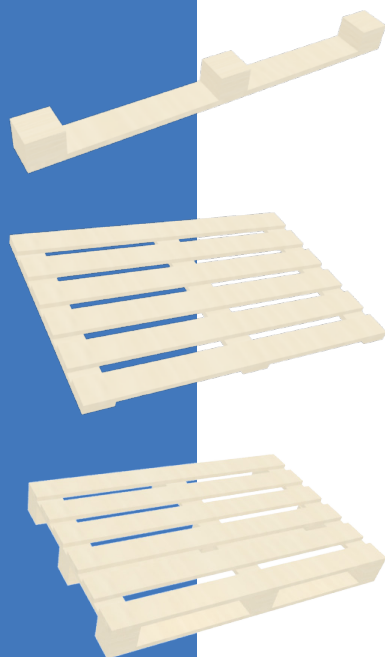
Automatic SMS-2000 with high flexibility

Making adjustment in width is done, with in less then a few minute. The machine is ready to assemble a new pallet size.

SPECIFICATION MACHINE

Machine specification facts.	Standard performance
IM Hart machine deliveries. All machines are delivered according to CE Certification and complete documentation for Electricity, Hydraulics and pneumatics all according to European standard	
Operators	1
Length	4m
Width	2,5m excluding platform ladder
Height	3,6m
Power	15kw 50A ,3x400V
Pneumatic system	7 bar compressed dried air: 300 L/min
Should be filled and controlled	Container for lubricating oil, Compressor not included
Hydraulic system	Contains 180 liters
Should be filled and controlled	Mineral oil ISO VG 68, ex Shell Tellus 68
Machine capacity time	4 complete pallets/minute (800x1200)
Standard equipment performance	3 ea .Channels motorized adjusted
	1 ea. Hydraulic unit
	Operators terminal for production control with network possibilities
Nailing system	Individual hydraulic nailing , 1 ea. nail boxes IMH-9, 9 ea. 9 ea. indication system, 9 ea. individual nail pickers.

SPECIFICATION MATERIAL



Material: Legs including blocks	Minimum	Maximum
Material		Solid wood or pressed blocks
Length	600mm	1600 mm
Width	75mm	150 mm
Thickness	70+16 mm	100+22 mm
Material: Decks	Minimum	Maximum
Length	600mm	1600 mm
Width	600mm	1400 mm
Thickness	16mm x2	28mm x 2
Pallet size	Minimum	Maximum
Length deck & legs	600 mm	1600 mm
Width deck	600 mm	1400 mm